

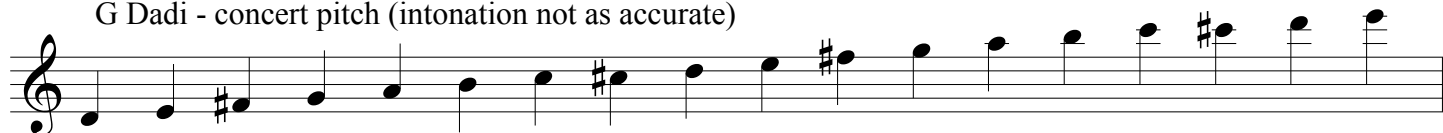
The Various Dizi Available in Sound of Dragon Ensemble

The notated notes are the most common pitches played on each of the flutes, corresponding to the fingering charts.

Theoretically, within the range of each flute, the full chromatic scale can be produced with half holes. However, some notes are easier to play than others, and the pitches are not always accurate.

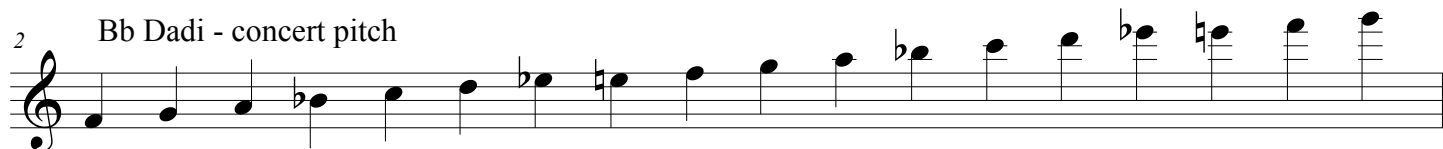
Notes slightly higher than the notated range may also be playable on some dizi.

G Dadi - concert pitch (intonation not as accurate)



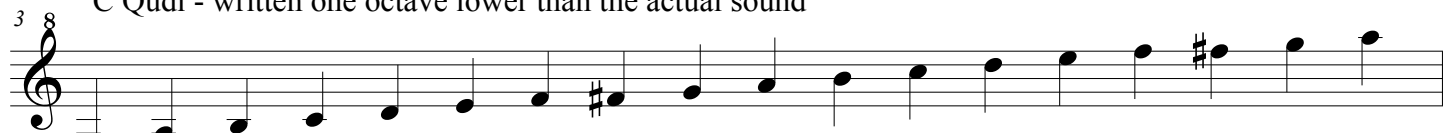
D4	E4	F#4	G4	A4	B4	C5	C#5	D5	E5	F#5	G5	A5	B5	C6	C#6	D6	E6
Sol	La	Si	Do	Re	Mi	Fa	#Fa	Sol	La	Si	Do	Re	Mi	Fa	#Fa	Sol	La
Re	Mi	#Fa	Sol	La	Si	Do	#Do	Re	Mi	#Fa	Sol	La	Si	Do	#Do	Re	Mi

2 Bb Dadi - concert pitch



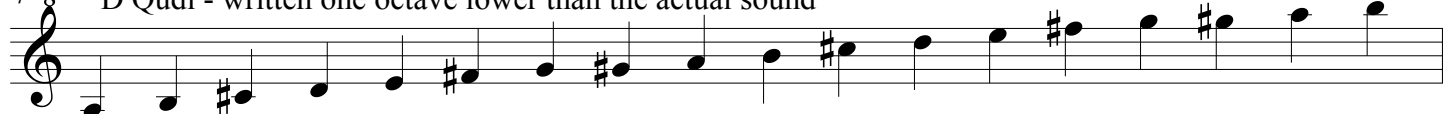
F4	G4	A4	Bb4	C5	D5	Eb5	E5	F5	G5	A5	Bb5	C6	D6	Eb6	E6	F6	G6
Sol	La	Si	Do	Re	Mi	Fa	#Fa	Sol	La	Si	Do	Re	Mi	Fa	#Fa	Sol	La
Re	Mi	#Fa	Sol	La	Si	Do	#Do	Re	Mi	#Fa	Sol	La	Si	Do	#Do	Re	Mi

3 8 C Qudi - written one octave lower than the actual sound



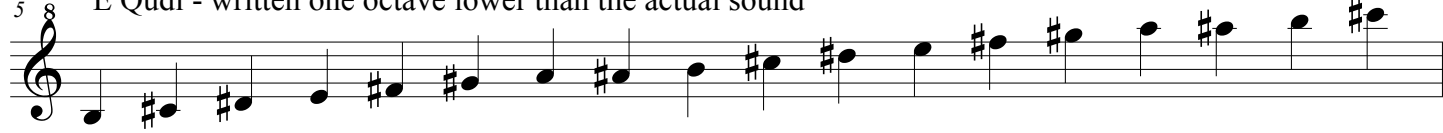
G4	A4	B4	C5	D5	E5	F5	F#5	G5	A5	B5	C6	D6	E6	F6	F#6	G6	A6
Sol	La	Si	Do	Re	Mi	Fa	#Fa	Sol	La	Si	Do	Re	Mi	Fa	#Fa	Sol	La
Re	Mi	#Fa	Sol	La	Si	Do	#Do	Re	Mi	#Fa	Sol	La	Si	Do	#Do	Re	Mi

4 8 D Qudi - written one octave lower than the actual sound



A4	B4	C#5	D5	E5	F#5	G5	G#5	A5	B5	C#6	D6	E6	F#6	G6	G#6	A6	B6
Sol	La	Si	Do	Re	Mi	Fa	#Fa	Sol	La	Si	Do	Re	Mi	Fa	#Fa	Sol	La
Re	Mi	#Fa	Sol	La	Si	Do	#Do	Re	Mi	#Fa	Sol	La	Si	Do	#Do	Re	Mi

5 8 E Qudi - written one octave lower than the actual sound



B4	C#5	D#5	E5	F#5	G#5	A5	A#5	B5	C#6	D#6	E6	F#6	G#6	A6	A#6	B6	C#7
Sol	La	Si	Do	Re	Mi	Fa	#Fa	Sol	La	Si	Do	Re	Mi	Fa	#Fa	Sol	La
Re	Mi	#Fa	Sol	La	Si	Do	#Do	Re	Mi	#Fa	Sol	La	Si	Do	#Do	Re	Mi

6 8 F Bangdi - written one octave lower than the actual sound

C5 D5 E5 F5 G5 A5 Bb5 B5 C6 D6 E6 F6 G6 A6 Bb6 B6 C7 D7
 Sol La Si Do Re Mi Fa #Fa Sol La Si Do Re Mi Fa #Fa Sol La
 Re Mi #Fa Sol La Si Do #Do Re Mi #Fa Sol La Si Do #Do Re Mi

7 8 G Bangdi - written one octave lower than the actual sound

D5 E5 F#5 G5 A5 B5 C6 C#6 D6 E6 F#6 G6 A6 B6 C7 C#7 D7 E7
 Sol La Si Do Re Mi Fa #Fa Sol La Si Do Re Mi Fa #Fa Sol La
 Re Mi #Fa Sol La Si Do #Do Re Mi #Fa Sol La Si Do #Do Re Mi

8 8 A Bangdi - written one octave lower than the actual sound

E5 F#5 G#5 A5 B5 C#6 D6 D#6 E6 F#6 G#6 A6 B6 C#7 D7 D#7 E7 F#7
 Sol La Si Do Re Mi Fa #Fa Sol La Si Do Re Mi Fa #Fa Sol La
 Re Mi #Fa Sol La Si Do #Do Re Mi #Fa Sol La Si Do #Do Re Mi

9 8 Bb Xiaodi - written one octave lower than the actual sound

F4 G4 A4 Bb4 C5 D5 Eb5 E5 F5 G5 A5 Bb5 C6 D6 Eb6 E6 F6 G6
 Sol La Si Do Re Mi Fa #Fa Sol La Si Do Re Mi Fa #Fa Sol La
 Re Mi #Fa Sol La Si Do #Do Re Mi #Fa Sol La Si Do #Do Re Mi

10 8 C Xiaodi - written one octave lower than the actual sound

G4 A4 B4 C5 D5 E5 F5 F#5 G5 A5 B5 C6 D6 E6 F6 F#6 G6 A6
 Sol La Si Do Re Mi Fa #Fa Sol La Si Do Re Mi Fa #Fa Sol La
 Re Mi #Fa Sol La Si Do #Do Re Mi #Fa Sol La Si Do #Do Re Mi